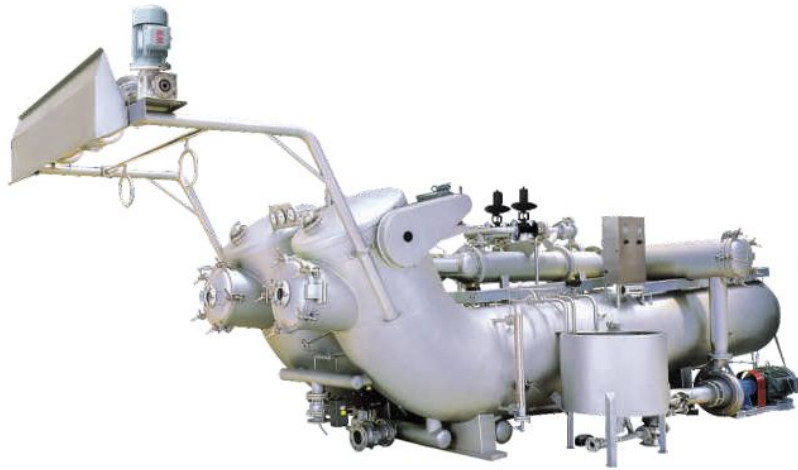


SLA系列高温高压染色机

SLA series HTHP Dyeing Machine



产品介绍

- ◇短流程、内置式走布管设计的针织全方位机型，使该机达到高品质的染色效果，并且操作方便、合理，受到印染行业一致好评。
- ◇机器载布量分：50kg、100kg、250kg、500kg、1000kg等。

主要技术特点

- ◇染色流程短，布长适中，浴比低。
- ◇内置式复合变径式导布管：可将张力降至最小，并且有效清除经向折痕的功能。
- ◇溢流与喷射水流的喷嘴可供选用：适合布克重从50-600g/m²的各种高档织物染色。
- ◇机器高度低，张力低，染色后缩水率小，成品码重容易达成。

技术参数 Technical parameters

机器规格及型号 Machine specification and Model	容布量 Loading capacity(kg)	管数/槽数 Number of tubes	装机功率 Power capacity(KW)	外形尺寸(长×宽×高) Dimension (length×width×height)
SLA-50	35-50	1/1	11.6	6000×1350×2350
SLA-100	70-100	1/1	11.6	7500×1350×2350
SLA-1	175-250	1/2	20.2	8000×1850×2700
SLA-2	350-500	2/4	37.4	8000×3400×2700
SLA-4	700-1000	4/8	68.3	8000×6000×2700

- ◇所列规格如有改良或修正，不再另行通知。
- ◇Specification subject to change without further notice.

SLC(S)系列高温高压中样染色机

SLC(S) series HTHP Medium-Batch Sample Dyeing Machine



产品介绍

- ◇该机器采用新型的喷嘴系统及织物扩散整理系统有效提高了织物的品质及产量，降低了浴比，达到环保节能，迎合当今市场最大需求的挑战设备。
- ◇机器载布量分：1kg、10kg、30kg、50kg、100kg等。

标准结构

- ◇机身和所有与染液接触部分均采用进口高度抗腐蚀不锈钢制造。
- ◇不锈钢染色循环泵提供最优化的染液循环。
- ◇提升辊由变频器控制的马达驱动。
- ◇配备注料泵和阀门系统的加料系统
- ◇高效热交换器
- ◇自动控制翻板水位显示器
- ◇入水和排水优质阀门控制

技术参数 Technical parameters

机器规格及型号 Machine specification and Model	容布量 Loading capacity(kg)	管数/槽数 Number of tubes	装机功率 Power capacity(KW)	外形尺寸(长×宽×高) Dimension (length×width×height)
SLC(S)-1	0.5-1	1/1	2.95	1100×1100×1750
SLC(S)-10	5-10	1/1	3.75	2200×800×2200
SLC(S)-30	20-30	1/1	6.6	4400×1260×2600
SLC(S)-50	35-50	1/1	8.1	4670×1320×2720
SLC(S)-100	70-100	1/1	10.45	5500×1460×3080

- ◇所列规格如有改良或修正，不再另行通知。
- ◇Specification subject to change without further notice.

Description

- ◇ Short cycle and inner-put fabric-guiding tube featured knitting machine: Achieving high-quality dyeing effect, convenient and easy operation.
- ◇ Loading capacity: 50kg, 100kg, 250kg, 500kg, 1000kg, etc.

Key Technical Features

- ◇ Low dyeing flow, appropriate fabric length, low liquor ratio.
- ◇ Internal complex changing-diameter fabric-guiding tube lowers tension to minimum, and effectively removes longitudinal creases.
- ◇ Options of nozzles of overflow and jet flow: suitable for dyeing of various kinds of top grade fabric of 50-600g/m².
- ◇ Low machine height, low tension, low shrinking ratio after dyeing.

主要技术特点

- ◇低浴比1:6-7：污水排放量减少、染液循环次数增多、处染物色泽更均匀，节约染料、助剂、水、蒸汽和电能。
- ◇优良的织物扩散效果：织物呈现松弛状，无褶皱，成品处染效果好。
- ◇更环保：低耗水量、低耗能，低排放量，低耗电量。

Description

- ◇ Adopting new nozzle system and fabric spreading and straitening system, the machine effectively improves fabric quality and productivity, lowers liquor ratio, achieves environmental protection and energy saving, caters for the most demands of the current market.
- ◇ Loading capacity: 1kg, 10kg, 30kg, 50kg, 100kg etc.

Key Technical Features

- ◇ Low liquor ratio 1:6-7: decreases polluted water discharge, increases dyeing liquid cycling number, achieves even dyeing effect, saves dyestuff, agents, water, steam and electricity.
- ◇ Excellent fabric spreading effect: loose, without creases, good dyeing effect.
- ◇ More environmentally protecting: Low water consumption, low energy consumption, low discharge, low electricity consumption.

Typical Structure

- ◇ Machine body and all parts in contact with dye liquid made from highly corrosion resistant stainless steel.
- ◇ The stainless steel dyeing circulating pump provides optimized the dye liquor circulation.
- ◇ Lifter reel driven by frequency inverter controlled motor
- ◇ Service tank with feed pump and valve system.
- ◇ Highly efficient heat exchanger.
- ◇ Automatic water level monitor.
- ◇ Filling and drain controlled by high quality valves.